



# ..... CASE STUDY .....



**SAMSUNG TECHWIN**

---

# Case Study Contents

3	<b>BANKING</b> Commonwealth Bank Komerčni Bank
5	<b>COMMERCIAL</b> Talk Talk Verulam Point
8	<b>DISTRIBUTION</b> A.F Blakemore & Son Ltd
10	<b>HOTEL</b> Le Meurice
12	<b>HIGHWAYS</b> Austrian Highways
14	<b>LOGISTICS</b> APC Overnight
16	<b>PUBLIC SPACE</b> Holylands Ponferrada
18	<b>RETAIL</b> JD Sports Disney Stores
21	<b>STADIA</b> Roda Stadium Charlton Athletic FC Millwall FC
25	<b>WAREHOUSING</b> HB Litherland

---



Commonwealth Bank

"I am pleased to say that we have been able to provide equipment which can be regarded as the best in its class and is able to exactly match the Bank's demanding requirements."

Richard Slee,  
Director of Security Systems Design Limited

**Security Systems Design Limited has successfully completed the installation of a Samsung CCTV system at the London offices of the Commonwealth Bank of Australia.**

Following a refurbishment of its offices on the third floor of Senator House in Queen Victoria Street, EC4, the Bank asked Richard Slee, a Director of Security Systems Design Limited, to design a CCTV system which could assist security personnel to provide a high level of protection for staff as well as the Bank's assets.

The Commonwealth Bank of Australia employs 38,000 people worldwide. Staff at its London offices are responsible for developing strategic partnerships with European banks and they also assist migrants to relocate their finances to Australia.

"Senator House is a multi-tenanted office building and although no cash is handled on the premises, the Bank nevertheless needs to maintain strict control over visitors, welcome or otherwise," said Richard Slee. "The objective therefore was to install a CCTV system to work alongside an existing access control system."

Richard worked closely with the Bank's Facilities Manager to draw up the specification

for the system which included a requirement that all cameras should have day/night capabilities, as well as built-in lighting so that high quality colour images could be captured during the day and equally good monochrome images in night time conditions. "We considered cameras as well as digital recording equipment from a number of manufacturers. We came to the conclusion that we could source all that was required from Samsung who were able to demonstrate confidence in the reliability of their equipment by offering a full three year warranty," added Richard Slee. "The other important factor that helped us make the decision to use Samsung equipment was that its DVRs are supplied with license-free CMS (Centralised Management Software) which makes it very easy for the Facilities Manager to monitor the CCTV system from a PC on his desk."

Security Systems Design Limited installed nine Samsung SIR-60 Day/Night dome cameras with built-in LEDs. The SIR-60 can capture very high quality colour images at 580TV lines resolution during the day. At night or in any environment where there may be zero light, the camera's built-in LEDs are activated and provide effective lighting up to a distance of seven metres. At the same time, the camera switches to monochrome mode generating superb monochrome images at 700TV lines resolution. The brightness of the LEDs is automatically adjusted to take into account how far away an object or person is from the camera.

Images from the nine cameras are recorded simultaneously onto a Samsung SVR-945 DVR which uses a highly efficient MPEG-4 compression method to ensure that the three terabytes of on-board video storage capacity is more than enough to record all

activity throughout the Bank's offices. The SVR-945 is located in the Bank's secure comms room.

"In the current economic climate, the client was understandably looking for a solution which would not put undue strain on the budget available for security equipment," added Richard Slee. "I am pleased to say that we have been able to provide equipment which can be regarded as the best in its class and is able to exactly match the Bank's demanding requirements."

**SIR-60**



1/3" true day/night internal dome with built-in IR LEDs

- 580/700TV lines resolution
- 3.6mm lens
- Motion detection
- 12V DC

**SVR-945**



9 channel compact digital video recorder

- Up to real-time 4-CIF resolution recording, selectable per channel
- 3 monitor outputs
- CMS software compatible



Komerční Bank

ADI International Banking on Samsung Techwin

**Samsung Techwin CCTV cameras have been installed in over 200 Komerční Bank branches throughout the Czech Republic.**

Komerční Banka is one of the largest banking organisations in the Czech Republic serving approximately 1.5 million customers via a nationwide branch network. It was founded in 1990 following the division of the former State Bank of Czechoslovakia.

The cameras have been supplied via ADI-Olympo Czech's and Slovak's leading CCTV distributor. Zdenek Kubiczek, Product and Sales manager for ADI-Olympo said: "We have been supplying a mixture of Samsung Techwin fixed cameras and domes, and vandal proof fixed domes. They were easy to recommend as they are cameras with very good price/performance ratios. They also all incorporate Samsung's Super Noise Reduction technology which offers so many additional benefits, particularly when the cameras are expected to work in demanding lighting conditions."

The Samsung Techwin cameras were installed as part of the Bank's programme to replace older cameras that had served their purpose but were outdated in terms of their functionality. Several separate installation companies are involved in the project

Samsung Techwin Super Noise Reduction technology (SSNR) makes images cleaner and sharper by eliminating high levels of noise normally generated when lighting levels are low, without creating ghosting or motion blur. With SSNR applied, the file sizes of the recorded video are dramatically reduced and SSNR offer the potential of an overall cost reduction of a large CCTV system of up to 25%. This is because a major part of the cost of large CCTV systems is attributed to the provision of hard disc storage and associated equipment.





TalkTalk

## TalkTalk happy to shout loud about their Samsung CCTV system

### Leading broadband supplier TalkTalk's new London head office building is being protected by a sophisticated CCTV system designed and installed by security specialists Keyways

The new building was acquired by TalkTalk as part of the process of the planned demerger from Carphone Warehouse and as a result 850 Talk Talk personnel have moved into the seven storey building situated in Evesham Street, W11.

According to Michael Greaves a Director of Altringham based Keyways, the CCTV system has proved to be a great success despite the fact that the building presented a number of challenges. "The building is extensively glazed and we therefore needed to select cameras with powerful backlight compensation capabilities to be able to deliver high resolution color images even on the sunniest of days."

Michael Greaves' research led him to single source all the newly installed cameras from Samsung. "We chose the SID-560 fixed dome camera to solve the particular problem of direct sunlight as well as reflections. The SID-560 has a colour resolution specification of 560TV lines but most importantly, it has an impressive Wide Dynamic Range (WDR) function which performs very well with challenging back light conditions."

Six SID-560s were installed where cameras needed to face directly towards glazed areas whilst nineteen SID-370 fixed dome cameras were tasked to provide coverage of other parts of the building. The SID-370 is a true day/night fixed dome camera with a 37x zoom capability. To complete the camera coverage, Keyways installed two Samsung SIR-60 cameras with built-in IR LED lighting to ensure control room operators can view any activity at night in the darkened staircase fire door areas.

"An additional problem for us was one of

aesthetics," added Michael. "As it is their head office building, TalkTalk quite rightly wanted to see a very neat installation with no unsightly cable runs. The challenge for us was that there are no false ceilings where cables can be concealed. Fortunately the Samsung cameras can be fitted with galvanized back boxes which can be installed into ceilings and walls. It meant a lot of work for our installation team but resulted in a completed system that looks and performs very well."

The video from all the cameras are monitored twenty-four hours a day by security personnel located at the building's reception. For evidence purposes, the video is recorded and stored on two Samsung SVR-1645 DVRs, each of which has the ability to record video to 4-CIF resolution. The SVR-1645 also provides the option to simultaneously record audio on all sixteen channels and has an audio detection feature so that recording can be triggered by the sound input when it reaches a specific level. Algorithms unique to Samsung, equip the SVR-1645 with multi-streaming real-time monitoring over a network whilst the CMS (Centralised Management Software) supplied with the DVRs provides out-of-the-box network capability for all the connected Samsung products.

Commenting on the standard of the CCTV system, TalkTalk's Regional Facilities Manager Jill Tucker said: "We wanted a high performance CCTV system that could provide our on-site security personnel with a valuable tool in their efforts to create a safe environment for our staff as well as to protect our assets. I am pleased to say that the equipment recommended and installed by Keyways is certainly performing well against the agreed criteria."

The CCTV system has been integrated

with a Mifare access control system to ensure authorised staff and guests can be identified and allowed access to all areas of the building whilst unwanted visitors are prevented from going beyond the building's reception area.

#### SID-370



1/4" true day night internal dome with 37X optical zoom

- 550/680 TV lines resolution
- 37X optical zoom (3.5-129.5mm)
- SSNR11 noise reduction
- 12V DC

#### SID-560



1/3" colour/monochrome varifocal mini-dome

- 560 TV lines resolution
- 2.8-10mm varifocal lens
- Wide dynamic range
- SSNR11 noise reduction
- 3-axis camera mount
- 12V DC

#### SVR-1645



16 channel digital video recorder

- 16 video inputs
- 1 x BNC and 1 x VGA main monitor outputs
- 1 x BNC spot monitor output
- 400fps real-time recording
- Built-in DVD drive
- MPEG-4 compression
- Licence-free centralised management software (CMS) supplied



Adrian La Riviere outside Verulam Point, a 53,000 sq ft commercial building

Verulam Point

## Samsung Techwin secures Verulam Point

Overlooking St. Albans Station in the centre of the city, Verulam Point is an impressive looking building comprising 53,000 sq ft of corporate offices. Although built in 1991, the building looks remarkably new, having recently undergone a major refurbishment overseen by managing agents, Drivers Jonas LLP.

Drivers Jonas ordered a new CCTV system as part of the refurbishment programme. "The original CCTV system which we inherited from the previous managing agents, was well past its 'use by date,'" said Adrian La Riviere, Drivers Jonas' onsite Building Manager. "It had done a good job but the cameras used outdated technology and only captured black and white images. We wanted to take advantage of the latest digital technology so that we could maximise the return on our investment in a new CCTV system."

Adrian was appointed Building Manager of Verulam Point in January 2009 and one of his first tasks was to oversee the installation of the new CCTV system. "The number and location of the cameras had already been decided by the previous company and collectively they provided for comprehensive coverage of the building and car park," said Adrian. "I decided however to approach Tag Security Solutions for advice on the equipment which had been specified. They recommended that we should source all the component parts of the CCTV system from the professional security division of Samsung Techwin. As a result I am pleased to say that we have not only ended up with a higher quality solution than the equipment originally specified, but received much better value for money as well."

Thirteen Samsung Techwin day/night cameras with lenses, a combination of fixed

cameras, fixed domes and speed domes, have been installed at Verulam Point which together allow security personnel to monitor 24/7 of all activity on the site. "There has never been a major security issue at Verulam Point but we want to ensure that our tenants' employees can work in a safe and secure environment," added Adrian. "There is no doubt that the new CCTV system, and in particular the speed dome cameras, act as a powerful deterrent to unwanted visitors and allow our operators to watch staff leaving late at night to ensure their safety."

#### Out of the box control room

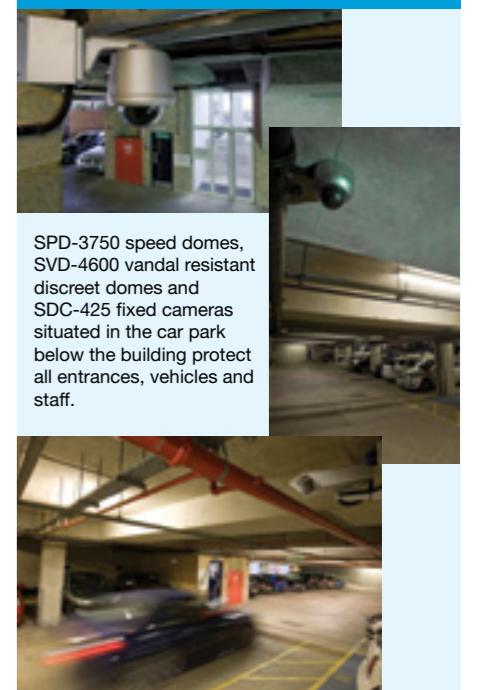
At the heart of the solution is an SVR-3200 DVR. With 32 channels it was the ideal solution to replace the two DVRs that existed before. Described as a "Control room in a box" the SVR-3200 not only offers a neater solution, it is also fully future proof with space to install extra internal hard disks quickly and easily, not to mention having spare inputs to offer Verulam Point the opportunity to increase the number of cameras without having to buy a new DVR.

#### External

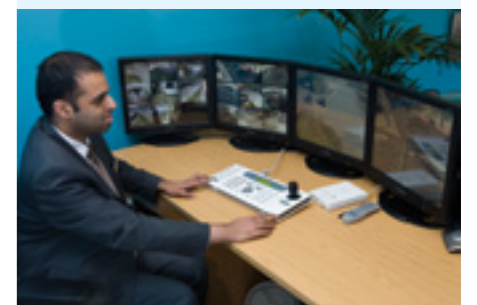


A mix of Samsung Techwin speed domes and static cameras protect the building's exterior.

#### Internal



SPD-3750 speed domes, SVD-4600 vandal resistant discreet domes and SDC-425 fixed cameras situated in the car park below the building protect all entrances, vehicles and staff.



The SVR-3200 32 channel digital video recorder sits at the centre of the installation. With the ability to connect up to six monitors to the unit, Verulam Point is able to display multiple views and offers flexibility for future hard drive addition and system expansion.



"...I am pleased to say that we have not only ended up with a higher quality solution than the equipment originally specified, but received much better value for money as well."

Adrian La Riviere, onsite Building Manager



Images are viewed from the DVR using a bank of four Samsung Techwin STM -19LA nineteen inch monitors, which are able to display any number of user-selectable views. The entire system is controlled with a SSC-3100 keyboard,

The SVR-3200 has a built-in DVD writer to provide for easy back-up and has the potential for 4TB of internal storage, rising to 12TB with the optional SVS-5 external hard disk kit.

Three different types of Samsung Techwin domes have been deployed. A small and discrete SID-56 has been installed overlooking the escalators at the entrance to the building, whilst vandal resistant SVD-4600s and the very latest addition to the Samsung Techwin dome range, the

SPD-3750, have been installed at various locations around the building and car park. The SPD-3750 utilises the world's first 37X optical zoom allowing close up detail of far away objects and benefits from the 2nd generation of Samsung Techwin's Samsung Super Noise Reduction (SSNR II) technology which ensures the cameras deliver clear and sharp images by eliminating high levels of noise in low light conditions without creating ghosting or smearing.

All the Samsung Techwin equipment, which was supplied by CCTVprotect (www.cctvprotect.co.uk), was installed and commissioned by Tag Security Solutions who are part of the Cosmo Services Group.

"We are very pleased with the images generated from all the cameras and

particularly so in night time conditions," said Adrian. "We have, for example, a camera in our plant room and even with the lights out, the camera is able to assist us in verifying any activity."

"I have been impressed with how well the people at Tag Security and Samsung Techwin have worked together to ensure that Verulam Point has a first class CCTV system. Our security personnel are very happy as they find the system very easy to control and the images of superior quality. The next stage for us is to implement Samsung Techwin's licence-free Central Management System (CMS) software to give us quick and easy remote access to the system."



A.F. Blakemore & Son Ltd

## Protecting stock, staff and assets

### The Client

The origins of A.F. Blakemore & Son Ltd date back to 1917, when Arthur Blakemore opened a 350sq ft counter service store in Wolverhampton. A.F. Blakemore has grown considerably over the past century and now employs around 5,500 people with a turnover in excess of £700 million per year. Following the acquisition of Tates Ltd in 1994, A.F. Blakemore also has a strong "own-stores" division encompassing more than 200 SPAR shops.

### The Challenge

A.F. Blakemore & Son's distribution centre in Great Bridge, holds many hundreds of thousands of pounds of stock scheduled to be delivered to one of its many clients across the country. The company has an enviable reputation for being reliable and an essential part of this is always delivering on time. Any threat to this continuity of supply is therefore totally unacceptable. Security in and around the company's premises has to be of the highest level to deter and, if necessary, detect would be vandals and thieves.

The existing CCTV system at the Great Bridge 84,000 sq ft distribution centre was well past its 'use by date'. It no longer met the client's changing requirements in terms of coverage and

the old generation cameras were unable to produce the quality of images needed by the CCTV system operators to react quickly and effectively to any incident. The operators also did not find the existing equipment easy to use and were therefore unable to get the maximum benefit from the system.

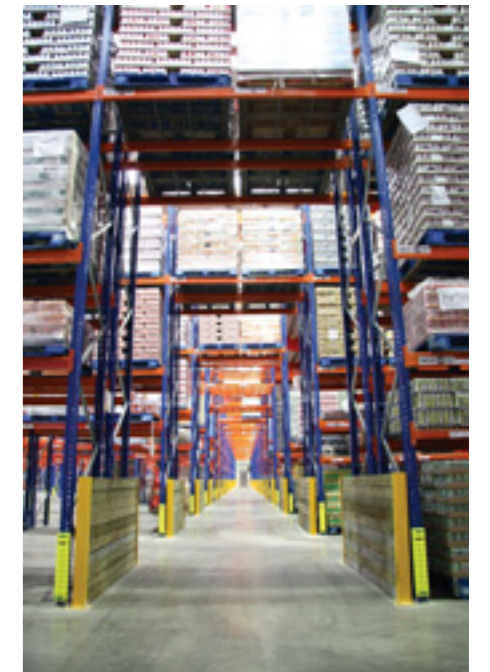
### The Solution

A.F. Blakemore & Son entrusted CCTV specialists, ID Security Systems Ltd to design, supply and install a CCTV system which could take advantage of the very latest advances in technology. Ian Harris, Sales Manager for Aston, Birmingham based ID Security Systems Ltd said: "We decided to source all the equipment from the professional security division of Samsung following extensive research involving the evaluation of CCTV equipment from a number of different manufacturers. Each of the Samsung products selected has some truly impressive features and with each product being competitively priced, the decision was made very easy for us."

ID Security Systems Ltd installed a total of 43 Samsung cameras, the majority of which are a combination of fixed and zoom cameras but also included were two SPD-3750T PTZ dome cameras. In addition to incorporating a 37 x optical zoom lens, the SPD-3750T also has an automatic tracking function. These two powerful features equip the SPD-3750T to track subjects and zoom in on them

for evidence gathering purposes without any operator intervention.

Panning at up to 500 degrees per second, the SPD-3750T offers the option of automatic scene tours or can be programmed to move to 256 preset positions.



### Equipment used

#### SVR-3200



32 channel real-time DVR

- Half real-time D1 resolution recording across all channels or real-time D1 resolution recording across selected channels
- 6 multi-monitor outputs
- Supplied with licence-free Central Management System (CMS) software
- Built-in DVD drive and 2 x front panel USB ports

#### SDC-425

1/3" high resolution colour / monochrome camera



- 580TVL resolution
- SSNR II image noise reduction technology
- Digital image stabilisation
- Highlight compensation

#### SLA-3580DN

1/3" auto iris day/night varifocal lens



- 3.5-8mm focal length
- Optically correct for day/night operation

#### SPD-3750 in external housing

37x fully functional speed dome



- 37x optical zoom lens
- Wide Dynamic Range (WDR) operation
- SSNR II image noise reduction technology
- 500° per second (max) pan and tilt operation

#### SVD-4600

1/3" high resolution vandal resistant fixed dome



- 560TVL resolution
- SSNR II image noise reduction technology
- Weatherproof to IP66
- Digital image stabilisation

#### SID-56

1/3" high resolution dome camera



- 580TVL resolution
- Built-in 6mm lens
- SSNR II image noise reduction technology
- 12V DC operation

#### STM-19LA

19" professional security display monitor



- 2x BNC loop through, S-Video with loop through & VGA inputs
- 1280 x 1024 resolution output
- 800:1 high contrast ratio
- 5ms response time



“Security in and around the company’s premises has to be of the highest level to deter and, if necessary, detect would be vandals and thieves.”



Live or recorded images from all 43 cameras can be viewed on Samsung STM-17LA monitors via one of four Samsung SVR-1660C DVRs installed in the onsite control room whilst there is the option for A.F. Blakemore & Son’s security management to remotely monitor activity using Samsung Centralised Management Software which is supplied licence-free with every DVR.

**The Results**

“Having acquired the site at Great Bridge to support our existing and anticipated wholesale sales growth for the next decade, it is paramount that we provide a continual supply chain to our valued customers,” said Barry Davies, Managing Director of A. F. Blakemore & Son’s Logistics Division.

“In accordance with our business continuity programme, the protection of our warehouses, vehicles, products and staff is paramount. ID Security Solutions (IDSS) team, provided an effective flexible security solution with an ‘on time’ professional installation. Being a local, competitive business that shared our company values with a mutual long term relationship in mind, they fulfilled all our criteria and objectives”.



Le Meurice

Samsung secures leading Parisian Hotel

**Le Meurice can claim to have one of the highest occupancy rates, turnover and profitability of all of the seven Parisian palaces. Ideally located in the very heart of Paris and facing the Tuileries garden, Le Meurice offers 160 luxury rooms located throughout its seven floors. The hotels bar, two restaurants, several lounges and function rooms are part of the space open to the general public, as well as numerous lobbies and stairways.**

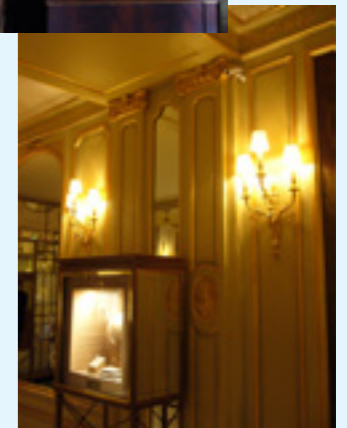
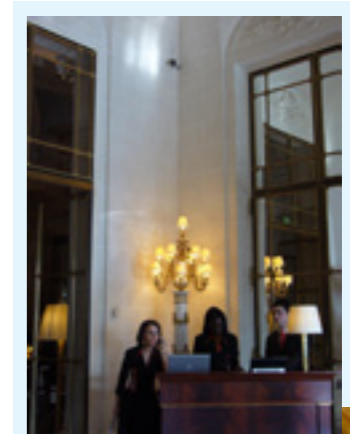
The hotel is accessible 24/7. Several security guards are permanently deployed at the hotel with one of the security guards tasked to keep a close eye over the video surveillance monitors. This service is subcontracted to Commodore, a company that has specific experience and know-how in respect to hotel security.

The Hotel wanted to upgrade its existing CCTV to both extend the areas covered and record higher quality images. A detailed risk assessment was carried out, followed by the production of a specification of the hotel’s technical requirement with a proviso that the chosen supplier must have proven track record of reliability and post sales technical support. Of prime importance in the design of the system was that the Le Meurice has listed interior architecture, which greatly limited the cabling options as well as the size and appearance of cameras. In fact, the existing cabling had to be re-used in the new system.

New cameras were installed to monitor floor access doors from the stairs so that people can be viewed entering and leaving. All entrances to the whole non-private interior space are now monitored, with a total surface of about 10,000 m<sup>2</sup> out of a total of 35,000 m<sup>2</sup>. The CCTV system covers all public spaces and circulation areas including, all stairways, kitchens and laundry rooms, as well as private areas such as the inner courtyards and the roof. Cameras are deliberately visible with a view to deterring any unwelcome activity. One of the key areas being monitored is a jewellery gallery where items from prestigious Parisian jewellers are on display.

A total of 68 analogue cameras had been previously installed and many of these have been replaced with higher-quality models. The system now comprises 94 cameras which include Samsung analogue cameras, speed domes and bullet cameras. The requirement for all of these cameras was that they had to be aesthetically acceptable whilst acting as a powerful deterrent. In addition Image quality had to be of a consistent high quality, even in challenging lighting conditions.

The Samsung SID-460 mini dome was chosen for its ability to generate very high quality colour images at 580 TV lines resolution, the flexibility of its varifocal lens and the 3-axis positioning capability of its camera module. The SID-460 incorporates Samsung Super Noise Reduction (SSNR II) technology which eliminates image noise in low light conditions. This allows consistent high quality colour reproduction in very low lighting conditions, as well as saving up to 70% storage space on the recording device and the reduction of bandwidth requirements when networking.

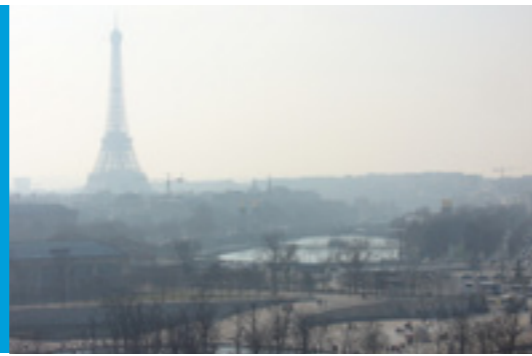


Le Meurice requires unobtrusive surveillance due to its listed status



« Access to images from our desks is one of the most pleasant points. We especially appreciate the intuitiveness of the search function to review past events, and the easy extraction of video clips and images. »

Mr. Nicolas Cosson,  
Technical Manager, Le Meurice.



Just Three SVR-3200 DVRs record and control the entire installation

All cameras are connected over coaxial cable to Samsung 32 channel SVR-3200 DVRs installed in a control room secured with access control. These recorders were chosen for their high processing and storage capabilities. Just three of the SVR-3200 are required and provide a significant reduction in heat dissipation from the previous equipment. 500GB video storage versions of the SVR-3200 were ordered and then upgraded to their full 8TB internal capacity by using easy to install HDD upgrade kits.

The SVR-3200 is supplied with licence-free Centralised Management Software (CMS), which gives users full control of DVR functions

from anywhere on the network. Images from all of the cameras are recorded at real-time 25 frames per second when triggered by motion detection. The high quality images can be stored for up to 15 days thanks to the high storage capacity of the SVR-3200. Live images are displayed and monitored in the guardhouse on three 19-inch monitors with cameras grouped by area. Motion detection alarms on external cameras trigger an automatic display of an intrusion event with operators being able to look at pre-intrusion images. Security personnel use a control keyboard with a joystick to control the cameras.

The installation was successfully completed without any delays or hitches and the hotel now has a CCTV system which is capable of capturing, recording and storing images to their required standard. The recently installed Samsung cameras and DVRs are supplied with a three year warranty guarantee whilst a spare hard disk is kept on site ensuring a fast replacement should the need arise. Access to images via the hotel's PCs is regarded as a definite bonus in that it is a very convenient and efficient method of viewing or searching for images. Equally important, the system was designed with the future in mind and additional cameras can therefore be easily and quickly installed in the future if required.

The client is very happy with the quality of the upgraded CCTV system and considerable goodwill has been created between everyone involved in the success of the project including the engineering firm of AB Associates, the system builder, Stentorius and the installer, AM Sécurité.

The Meurice often welcomes diplomatic delegations whose security teams appreciate the high level of security offered by the hotel. In most hotels these security teams install their own temporary security and video surveillance systems, however the new CCTV system at Le Meurice puts the hotel cameras at their disposal, saving time and money as well as offering a more discreet solution.

Le Meurice has a proactive approach to video surveillance, and it is clear that the security level achieved is a definite advantage for their clients.

#### Used in this installation

#### SVR-3200



32 channel digital video recorder

- Up to 4-CIF real time recording on selected channels
- 800ips 2-CIF, 400ips 4-CIF
- MPEG-4 compression
- Compatible with Samsung Centralized Management Software (CMS)
- Up to 8TB internal storage
- 2 x SATA ports for connecting Samsung SVS HDD expansion units

#### SID-460



1/3" high resolution colour/ monochrome fixed dome

- 580TVL resolution
- SSNR11 image noise reduction technology
- 2.8-10mm varifocal lens
- 3-axis camera bracket



#### Austrian Highways

## Samsung Techwin cameras used in video-based weather information system to improve road safety

**Just one or two degrees either side of freezing point can constitute the difference between having a clear run on Austrian roads, or the threat of a dangerous loss of traction.**

ASFINAG (Motorway and Expressway Financing AG), the operator of the Austrian motorway and expressway network, has put into operation a pilot weather information system where the latest road conditions can be monitored 24 hours a day.

ASFINAG, which sees the reduction of accident risk and accident consequences as the social duty of a modern customer-orientated motorway and expressway network operator, has already introduced tunnel monitoring systems to improve safety. The new weather information system, which has been developed in close collaboration with PRT GmbH in Vienna, is based upon an idea of ASFINAG colleague, Johannes Schippeck.

#### Video cameras and sensors convey an up-to-date analysis of the situation

In essence the system comprises a transmission module, sensors, illumination and three cameras. Data and video images are transmitted via a UMTS modem (Universal Mobile Telecommunications System) and LAN to a converter. There are then two options for examining and analysing the images and sensor values:

1. The data in the system can be accessed at each work place with an internet connection via a web browser
2. Access to the data can be obtained by vehicles via a UMTS modem. This enables the integration of mobile systems which could be deployed, for example, in gritting lorries.

When accessing the system, a high resolution video image is obtained along with the data from the sensors and any alarm values. Amongst the information displayed is data on air and ground temperature, precipitation, atmospheric humidity, the temperature at depths of 5 cm and 30 cm, the salt concentration and water film thickness. An enlarged complete picture can be obtained by an operator double clicking on the image.

#### The idea behind the system

If Schippeck and Robert Maurer of ASFINAG were asked how the idea arose, they would explain that a cost-benefit calculation lay at the centre of their deliberations and that they had always wanted to have an image of road conditions, even at night. A further requirement was the simple operation of the system. The combination of video images with a black ice signalling system, a number of weather and road information messages and alarms should also reduce the cost of ownership.



Samsung Techwin's SHC-745P camera provides a clear picture even in adverse weather conditions

#### Overview Screen



BT: Ground temperature  
LT: Air temperature  
LF: Air humidity  
NS: Precipitation

“A glance at the display monitor and I am able to see the prevailing roadway conditions as well as all weather and roadway data for this location. In the past we have had to observe two different systems which were frequently situated at different locations, but now I have everything in one place with all the information required for the winter service available at a glance. The high quality of the system's video, data and alarm signalling capabilities ensures it can easily be used by all motorway service employees who can react quickly when there are dangerous conditions.”

Mr. Windbichler  
from the agency in charge of motorway maintenance

**Modular system with powerful video technology**

The weather information system is distributed by PRT GmbH and is a multi-functional, modular configured system and is the first system solution of its type on the market which makes available video data combined with weather information data.

One of the strengths of the system lies not only in the intelligent temperature, precipitation, air humidity and road surface sensors which are built in, but also the control, calculation and transmission of the data. Multifaceted and independent alarm functions are possible according to customer preference. The well thought through web interface is easy to operate with regard to configuration, maintenance and daily use - in spite of potentially complex expansion stages.

A tricky question with this project was the choice of video technology. Cameras which could be considered for this had to be able to operate reliably, display an outstanding image quality and cope with the most severe light and atmospheric conditions, and as a consequence, be able to be deployed 24/7. ASFINAG together with Vienna based PRT GmbH chose to utilise SCH-745P cameras from Samsung Techwin. The SHC-745 is a

true day/night camera with an integrated IR-cut filter which incorporates SSNR II (Samsung Super Noise Reduction) technology. It has an extraordinarily high resolution of 560TVL (Colour) and high sensitivity of 0.05 Lux/F12 in colour mode or 0.006 Lux/F12 in monochrome mode and is able to display very detailed images in the most challenging lighting conditions.

Used in this installation

**SHC-745**



1/2" true day/night ultra low light camera

- 1/2" Ex-View CCD
- 0.5/0.006 lux (colour/monochrome)
- Integrated IR-cut filter
- Samsung Super Noise Reduction (SSNR II)
- Detailed colour replication in extremely low light conditions

**CONTACT**

Erich Brunner  
PRT Computersteuerungen GmbH, Wien, Österreich  
Tel.: +43 1 616 66 79  
Fax: +43 1 616 66 79 40  
e.brunner@prt.at  
www.prt.at

Andreas Schlawien  
Videosystems GmbH, München  
Tel.: 089/82988210  
Fax: 089/82988221  
a.schlawien@videosystems.de  
www.videosystems.de

ASFINAG AG  
www.asfinag.at

Originally published in the GIT Sicherheit & Management magazine.



APC Overnight

**Samsung and Securitec Systems package a comprehensive Network surveillance solution for APC Overnight**

**APC Overnight has never hesitated to invest in the latest technology to ensure that it provides an efficient and reliable service to its customers. With the help of electronic security experts, Securitec Systems and Samsung, it has applied the same philosophy to the CCTV system which it relies on to minimise shrinkage, protect its premises and monitor health & safety compliance at its national sorting centre in Wolverhampton.**

APC Overnight is the UK's largest next day delivery network with more than 125 local depots covering all areas of the country. The network specialises in timed deliveries, offering a choice of convenient morning or afternoon options as well as a Saturday service. APC Overnight collects, routes and delivers more than 1 million parcels each month with an industry-leading on-time delivery record.

Cannock based Securitec Systems were tasked by Colin Dicken, APC Overnight's Head of Security, to recommend how new IP based cameras could be introduced as part of an expansion of the CCTV system, whilst retaining the 64 existing analogue cameras which were still performing satisfactorily.

APC Overnight's requirements in respect of what they wanted to achieve from its CCTV had changed. The original system was installed for general security purposes but there were now two other specific objectives. The first of these

was to ensure that the company's health and safety policies were strictly adhered to and that if there was an accident or incident that needed investigating, there would be video evidence to call on. The second objective was to monitor the processing of every parcel that entered the building until it was loaded onto a delivery vehicle.

“The system provides a visual record of how we carefully and accurately handle our customers' parcels. It also helps us demonstrate how we monitor the parcels while they are in our care. Such video records also help to reduce claims,” said Colin Dicken. “The 96 cameras which we have now installed cover every square inch of our premises. There are absolutely no blind spots and we can therefore, track every movement of parcels from the moment they arrive until they are sent back on the road by tying in the CCTV system with our bar code booking system.”

Securitec Systems recommended and installed 32 Samsung SND-460V IP/network dome cameras. With its die-cast aluminium vandal resistant body and tough polycarbonate dome casing, the SND-460V provides a robust solution for a busy sorting centre and as it is a true day/night camera with an integrated IR cut-filter, it is also able to deliver high quality images even in the most demanding of lighting conditions. The SND-460V is also equipped with Samsung's Super Noise Reduction

technology (SSNR II), which eliminates image noise in low-light conditions without ghosting or blurring. There is also the added bonus that SSNR technology can save up to 70% of hard disk space on a digital video recorder, whilst maximising bandwidth when viewing the video over a network.



A Samsung SRN-3200 and 32x SNV-460V camera are installed at the site.



"It is important that we can identify and track individual packages through our sortation centre."

Colin Dicken,  
APC Overnight's Head of Security



Securitec Systems also upgraded the CCTV's recording facilities by installing four Samsung SVR-1680 DVRs onto which images captured by the analogue cameras are recorded, whilst a Samsung SRN-3200 records the images from the IP/network camera domes. The SVR-1680 DVR is capable of simultaneous real-time recording at full D1 (704 x 480) resolution across all its 16 channels whilst the SRN-3200 can record at half D1 resolution across all 32 channels and giving users the option to customise recording settings to achieve real-time full D1 resolution recording on selected channels.

"This project has been successful on two levels," said Martin Kadir of Securitec Systems. "We have been able to prolong the life of the previously installed 64 analogue cameras by integrating them with the 32 new Samsung IP/network dome cameras and this has saved APC Overnight a considerable sum of money by not having to rip out the existing cameras which have been performing satisfactorily. We have also achieved a high degree of integration allowing both sets of cameras to be monitored

from the same multi-screen display in APC's security control room. This has been achieved by utilising the control functionality of Samsung's licence free Centralised Management Software (CMS).

The cost of extending the CCTV system has already been justified according to Colin Dicken. Any complaints of lost or damaged parcels have been investigated with the help of video captured by the cameras. "We take great care to ensure that our customers' property arrives in good condition as well as on time," said Colin Dicken. "Therefore, it is important that we can identify and track individual packages through our sortation centre. The remarkable quality of the images we are seeing from the new IP/network cameras is certainly helping us to do this."



Parcels being sorted



Holylands

## Samsung celebrate success in Holylands

### Samsung dome cameras installed by CCTV specialists Wired Up Security Solutions have played a major role in ensuring that this year's St. Patrick's Day celebrations in the Holylands district of Belfast, were trouble free.

In 2009 serious disorder occurred and police were attacked. Residents of the area were shocked by the violence which spoilt the celebrations and left many feeling intimidated. A major factor was alcohol abuse by people coming into the area from outside.

In time for this year's celebrations and over a period of 13 days, Portstewart based Wired Up Security Solutions installed seven Samsung SPD-3750 high speed dome cameras to allow police and local officials to monitor live images of activity taking place in the main streets of Holylands and, if necessary, deploy a rapid and effective response to any unwelcome incidents. The high resolution images captured by the SPD-3750s were wirelessly transmitted via Wired Up Security's Evidence Master wireless system over a 2km distance to Belfast City centre. The Evidence Master can transmit up to 10km. The images were simultaneously relayed to a local police station as well as to Belfast City's control room, where they are recorded at 25 frames per second at 4 CIF resolution. CCTV controllers at both locations were able to have full control of the cameras.

"One of the main reasons why we recommended the SPD-3750 to Belfast City Council for this project is the camera's impressive 37 x optical zoom capability which provides operators with the flexibility and freedom to decide what to look at and if required, observe close up detail of any activity," said Cormac Hopkins (Proprietor) of Wired Up Security Solutions. "The SPD-3750 can also pan at 400 degrees per second and offers the option of automatic scene tours or can be programmed to move to 256 preset positions. It also uses Digital Image Stabilisation (DIS) technology to negate the effects of the camera shaking due to high winds or building vibration."

Richard McLernon, Belfast City Council's Community Safety Coordinator said: "Belfast City Council is committed to improving the safety of residents in the city. Through a partnership with the Police Service of Northern Ireland we have commissioned Wired Up Solutions to implement a redeployable CCTV scheme on our behalf. We believe that CCTV is a valuable tool and see this pilot project as an opportunity to look at both the technology and the effectiveness of this approach. Already, we have put the system to good use in helping to manage potential public disorder in the Greater University Area of Belfast. We have found the service from both Wired Up Solutions and Samsung has exceeded our expectations in the initial stages of the project."

The Evidence Master wireless system used to connect the SPD-3750s, offers massive time and cost savings compared to connecting cameras using optical fibre. It allows cameras to be installed very quickly with little or no civil works involved and no costly line rental. This system has also been extensively fitted in Dublin and has a proven track record with excellent technical support. The Evidence Master system is now being launched for retail by Wired Up Security Solutions - see [www.evidencemaster.co.uk](http://www.evidencemaster.co.uk)

The Evidence Master can be integrated into existing control rooms allowing the operators to use existing equipment to control their cameras, saving on increasing optical fibre line rental costs. Evidence Master Wireless links operate on a number of licence free bands, and are securely encrypted. The Evidence Master equipment is compact so there is minimal visual impact.



Samsung and Wired Up Security Solutions produced the technology which ensured that this year's St. Patrick's Day celebrations in Holylands took place with none of the serious disruptions that occurred during 2009. Cormac Hopkins believes that the CCTV system played its full part by deterring would be troublemakers. "The Samsung cameras produced superb quality images and the Evidence Master wireless system delivered that quality to the end users. We have since been commissioned by Belfast City Council to install any additional five SPD-3750 dome cameras to work alongside the seven which are already in situ. All 12 cameras will remain permanently in place and will be monitored 24/7 as part of a plan of action by the Council and the police to create a safe and secure living environment for the people who live and work in Holylands."

Wired Up Security Solutions can deliver a CCTV system which is interactive and has a flexible architecture, allowing the CCTV cameras to be supported by a public address system which allows operators to speak to people on the street to discourage anti social behaviour, nipping potential misdemeanours or crimes in the bud. Wired Up Security solutions system also allows the addition of help points to allow members of the public to call for assistance.

### SPD-3750



37X true day/night speed dome with wide dynamic range

- 37X optical zoom (3.5-129.5mm)
- 550/680 TV lines resolution
- SSNR11 noise reduction
- 24V AC





Ponferrada

## Installation of Samsung dome cameras by the City Council of Ponferrada

### Installation of Samsung dome cameras by the City Council of Ponferrada for the regulation of traffic and the control of vandalism in its historical centre.

Ponferrada is a municipality in the province of Leon, with one of the country's best conserved historical centres. Made up of a network of narrow streets which weave through the high part of the city and presided over by the majestic silhouette of the Templar Castle, the historic centre constitutes an area which requires special protection.

The City Council of Ponferrada wished to improve traffic in the centre and put in place deterrents to avoid vandalism. To do so, they approached DITEL (Desarrollo Informático de Televisión), a Spanish company which was founded in 1997 and has a strong track record in the development and implementation of CCTV and data/video transmission over fibre optics.

"The City Council needed an efficient solution delivered on a tight budget and designed for the future", explains Ramón Gutiérrez, manager of the project at DITEL. "Initially the installation of conventional cameras was considered, or rather analogue cameras with positioners, but we went on to propose dome IP cameras, finally settling on the Samsung SNC-C7478P, installing a total of 22 units".

The decision was based on a number of factors, including the cameras' performance, their ease of installation

and configuration, and above all, their complete integration with the Milestone recording and monitoring solution. Faced with these requirements, the Samsung dome camera emerged as a clear leader.

"The customer was looking for a camera with powerful zoom to provide complete control of traffic areas whilst acting as a deterrent to possible acts of vandalism", explains Gutiérrez. "What's more, the Samsung dome camera was perfect, thanks to its 36x motorized optical zoom and 12x digital zoom".

In addition to this, motion detection and pre- and post-alarm buffers were both important features. The camera also had to have WDR (Wide Dynamic Range) function, an IR cut filter to improve sensitivity to light when used in black and white mode at night, and a speed of 360°/second.

The installation and integration of 22 dome IP cameras into a surveillance system requires the installation process to be quick and easy, with settings for the camera being configured operationally. This means that it is important for the SNC-C7478P dome camera to support all IP protocols, as well as those of the cameras themselves.

"Experience has shown us that the integration of equipment from different manufacturers is not easy. However, we must admit that with Samsung, everything went like clockwork", Gutiérrez concludes.

SNC-C7478P



High speed network dome camera, 36x zoom, day & night

- MPEG4 & MJPEG (25 fps.)
- Motion detection and pre- and post-alarm buffer
- Micro SD memory card slot for alarm image recording
- Strong body, with sunshield, fan and heater
- 36x optical zoom and 12x digital zoom
- 540/570TVL Horizontal resolution
- WDR function, Colour/B&W with removable IR cut filter



JD Sports

## Samsung DVRs excel at JD Sports Fashion Group

### Samsung has been appointed by JD Sports Fashion Group as its preferred supplier of DVRs and cameras.

JD Sports Fashion Group currently has over 450 stores throughout the UK. The majority of the stores are operated as JD Sports outlets although the company also trades under the Banks, Scotts and Size fashion brands.

"We carried out extensive research and tested a wide range of CCTV equipment before deciding which manufacturer to commit to," said Tim Edwards, Group Loss Control Director. "It was clear that the Samsung SVR-1645 stood head and shoulders above any other DVR that we tested."

Tim was particularly impressed with the opportunity that the SVR-1645 offered to stream from any store D1 resolution images across the company's network to its CCTV control located at JD Sports Fashion Group's Heywood distribution centre. "The D1 quality of the live images more than met our requirements and Samsung were able to demonstrate that the same image quality could be achieved if we needed to remotely retrieve and play back previously recorded video," added Tim.

The sixteen channel SVR-1645 has a built-in DVD writer and uses MPEG-4 compression to record D1 resolution images at 100 frames per second and CIF resolution images at 400 frames per



second. The SVR-1645 is supplied with licence-free Centralised Management Software (CMS) which makes it very easy for customers to control how they display live or recorded images from any of the cameras on the network.

The SVR-1645 can also simultaneously record audio on all sixteen channels and has an audio detection feature so that recording can be triggered by the sound input when it reaches a specific level. The audio functionality is bi-directional which has proved to be particularly useful to the JD Sports Fashion Group as they use it to remotely challenge intruders when the stores are closed. This has been achieved at no extra cost

by integrating the SVR-1645 with each store's music system.

So far the SVR-1645 has been installed in sixty stores but either it or its successor, the SVR-1670 which is fully compatible, will automatically be specified as new stores are opened or as and when the security system for existing stores are upgraded. "One of the attractive features of the SVR-1645 is that it is very easy to use and our managers therefore need very little training on how to get the best out of it. It has therefore very quickly become very popular among our store management as well as our control room operators," added Tim.



There is further good news for Samsung in that JD Sports Fashion Group has also recently announced its decision to exclusively use Samsung CCTV cameras.



“Once again after extensive testing we were convinced that Samsung equipment offered the best option for us,”

Tim Edwards,  
Group Loss Control Director



“Once again after extensive testing we were convinced that Samsung equipment offered the best option for us,” said Tim. “The SID-562, SID-450 and SID-452 cameras, all of which have slightly different features, are specified for different locations in our stores. The SID-562, with its fantastic Wide Dynamic Range capability works particularly well, as it is able to capture outstanding quality images when located at the front door of our stores.”

Commenting on the news, Simon Shawley, Senior Sales Manager UK and Eire for the professional security division of Samsung Techwin Europe Ltd said: “We are naturally very pleased that our DVRs and cameras have been able to meet JD Sports Fashion Group’s exacting requirements. This much welcomed vote of confidence comes at a time when we have expanded our technical support team to ensure that we not only provide customers like JD Sports Fashion Group with the best possible products but that we also provide the highest levels of post sales support.”

Used in these installation

SID-562



1/3" colour/monochrome varifocal mini-dome

- 560 TV lines resolution
- 2.8-10mm varifocal lens
- Wide dynamic range
- SSNR noise reduction
- 3-axis camera mount
- 12V DC / 24V AC

SID-450



1/3" colour/monochrome varifocal mini-dome

- 530 TV lines resolution
- 3-9mm varifocal lens
- SSNR noise reduction
- 3-axis camera mount
- 12V DC

SVR-1645



16 channel digital video recorder

- 16 video inputs
- 1 x BNC and 1 x VGA main monitor outputs
- 1 x BNC spot monitor output
- 400ips real-time recording
- Built-in DVD drive
- MPEG-4 compression
- Licence-free centralised management software (CMS) supplied

SID-452



1/3" colour/monochrome varifocal mini-dome

- 530 TV lines resolution
- 3-9mm varifocal lens
- SSNR noise reduction
- 3-axis camera mount
- 12V DC / 24V AC



Disney Stores

Samsung Techwin DVRs in store for Disney

Samsung Techwin digital video recorders have been specified for the next phase of Disney Stores' UK expansion programme.

Disney currently has 56 stores located in most major cities of the UK. The stores sell a wide range of merchandise including collectables, toys, clothing and accessories for all ages, home ware, books, DVDs and videos.

Subject to the size of the CCTV system, the next phase stores will be equipped with either Samsung Techwin's SVR-960 nine channel or SVR-1680 sixteen channel DVR's.

Paul Miller, Integrated Solutions Director of Staines based RJ-Pro-Vue Ltd, who have for the last eighteen months been installing all the Disney Stores' CCTV systems, said: "Up until now we have installed another major DVR manufacturer's machines. We have however a clear brief from Disney Stores that they wish to capitalise on the latest technological advances to create a safe and secure environment for staff and customers, as well as provide a deterrent to would be thieves. Technology has moved on at a rapid pace and our research led us to believe that the latest generation of DVRs manufactured by the professional security division of Samsung Techwin offers the advanced features and functions which best meet Disney Stores' operational requirements."

The SVR-960 is capable of recording real-time CIF (352 x 288) resolution images across all nine channels or D1 (704 x 576) resolution across selected channels, whilst the SVR-1680 is capable of delivering real-time D1 resolution across all sixteen channels. They can both multi-stream video over a network using MPEG-4 compression. They also have in-built DVD writers for easy evidence back-up and offer ATM/POS transaction data recording and search facilities.

"A key benefit of Samsung Techwin's DVRs is that they are supplied with license free SNM-128S Central Management System (CMS) software which makes it very easy for Disney's security management either on site or remotely to control the DVRs and therefore monitor live images or retrieve recorded video." added Paul Miller. As its part number suggests, this operator friendly software can facilitate the remote simultaneous display of video from up to 128 cameras. It can, however, be connected to up to 1024 devices which can be standard cameras, IP cameras video servers or DVRs.

RJ-Pro-Vue Ltd has also supplied Samsung Techwin SCC-3100A keyboard controllers which further add to the operational efficiency of each of the CCTV systems with their 3D joystick control, easy-to-use keypads and large character LCD displays.

Commenting on the quality of the Samsung Techwin DVRs, Lee Gamble, Head of Loss Prevention for Disney Stores said: "Both the SVR-960 and SVR-1680 meet our main criteria very well in that they are easy to use, provide excellent remote dial-in facilities and deliver very high quality images. They also give us the option to purchase the hard discs from any source, allowing us to shop around if we need to increase the recording capacity of any of the machines in the future."



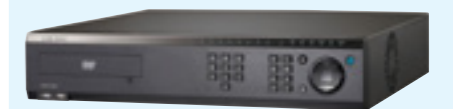
SVR-1680



16 channel real-time DVR

- Real-time recording at D1 resolution across all channels (400ips)
- Easily expandable internal HDD bays
- Supplied with licence-free Centralised Management Software (CMS) for network operation
- Built-in DVD writer and 2 x front panel USB ports
- 4 multi-image monitor outputs

SVR-960



9 channel digital video recorder

- Real-time recording at CIF resolution across all channels (225ips)
- Real-time recording at D1 resolution across selected channels (100ips)
- Easily expandable internal HDD bays
- Supplied with licence-free Centralised Management Software (CMS) for network operation
- Built-in DVD writer and 2 x front panel USB ports
- 3 multi-image monitor outputs

SCC-3100A



3-axis joystick

- Control and program all Samsung Techwin speed domes, DVRs and matrices





Roda Stadium

## Samsung Speed Domes in Roda Stadium

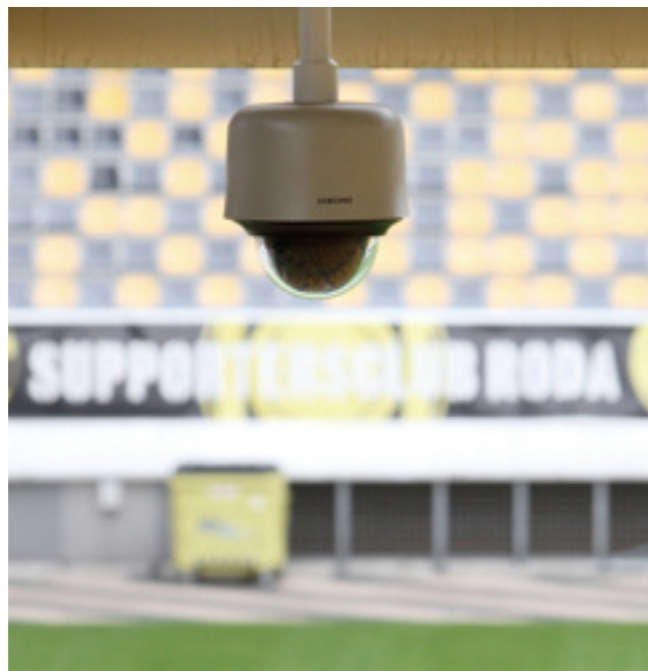
**Parkstad Stadium is home to Roda JC Football Club of Kerkrade in the Netherlands. The stadium was opened in the year 2000 and fitted out with a CCTV system that was very sophisticated at the time, but because the safety of the players, staff and fans are of vital importance to Roda JC the system has undergone a number of recent improvements to bring it up-to-date. For example, the existing time-lapse video recorders have been replaced by DVRs and a number of Samsung speed domes have been installed to replace the existing out-dated domes.**

Grein Alarmsystemen has been the security system provider for Roda JC since 1992 and installed the original alarm and camera systems in Parkstad Stadium when it opened in 2000. The stadium was kitted out with a state-of-the-art CCTV system for the time, which included speed domes, time-lapse recorders and photo printers. The system has worked well, but in recent years problems have arisen with operating the speed domes. Because of these technical issues, coupled with the fact that the specifications of the domes were out-dated, Grein Alarmsystemen was asked to find a suitable replacement for these domes that took advantage of the advances in technology that have occurred over the past ten years. This resulted in four Samsung speed domes being installed initially so they could be

properly tested in-situation.

Samsung SCC-C7455 domes were chosen as the ideal fit for the stadium. Not only were they easy to incorporate without having to run extra cables, but also offered extra functionality thanks to the inclusion of the intelligent A1 DSP which features Wide Dynamic Range (WDR). The domes have a large optical zoom (43x) which is very important for use in a football stadium. Any problems arising in the stadium can be identified very quickly and the powerful zoom provides great detail. "The domes have really been operating without a hitch right

from the start", says Ger Grein, owner of Grein Alarmsystemen. "The Samsung domes have been faultless from the beginning and supply crystal clear images. We had no problems integrating them in the existing system, therefore we will be replacing all the other old domes in the system shortly".



One of the Samsung domes in the stadium

"The domes have really been operating without a hitch right from the start."

Ger Grein,  
owner of Grein Alarmsystemen



Roda JC's Parkstad Stadium

The control room in Parkstad Stadium, which operates the CCTV system, is also the base for the Police and Fire Brigade during match days and because of the risks associated with the safety and security of players, staff and supporters it is very important that the system works well.

Ger remarks: "The Roda system is a prestigious project for us and receives our full attention. Apart from the installation and regular maintenance, the system is tested thoroughly by us prior to every home match to make sure that it will be working properly on match days." In the event of any problems with the crowd during matches it is imperative to identify the offenders with the CCTV system. For that reason, the control room has a printer that can print all images from offenders so that they can be identified and arrested by the police either during the game or immediately after the match.



Ger and Gilbert Grein at Parkstad Stadium

Gilbert Grein: "The requirements for a CCTV system in a football stadium are very high spec. Therefore it is important to keep the technology of the system up to date and improve it whenever possible. It goes without saying, that the Samsung speed domes are a valuable addition to the system", Ger Grein adds: "We do not have to convince our customers of the quality of Samsung, because often they have had good experiences with the brand in the consumer market and, moreover, the price-quality ratio of the Samsung domes is very competitive".

### Grein Alarmsystemen

Grein Alarmsystemen was founded by Ger Grein and has been operating for over 30 years, mainly in the Belgian market. The company currently employs four installers and works with a number of sole traders. It supplies a broad range of security systems and is specialised in camera and intruder systems predominantly for corporate clients. Gilbert Grein joined his father in the company 12 years ago and is now co-owner. The company is certified to NCP and Incert standards and is therefore authorised to supply certified installations in Belgium and the Netherlands. Grein Alarmsystemen has been the security system provider for Roda JC since 1992, but Ger Grein is also supporter and sponsor of the club.





Charlton Athletic FC

## Samsung help Charlton Athletic FC achieve its safety and security goals

### Samsung digital video recorders have been installed by Spy Alarms as part of an upgrade of Charlton Athletic Football Club's CCTV system.

Charlton Athletic FC's CCTV system has a major role to play during match days in order to comply with local authority licensing requirements. The club has to ensure that an effective CCTV system is in operation two hours before, during and one hour after a football match in order to comply with local authority's licensing laws. If they are not satisfied that all necessary measures have been taken to ensure crowd safety, the local authority can in fact refuse to grant a licence for a match to go ahead.

Images from the 32 dome cameras located in and around the stadium are recorded onto five Samsung SHR-5162 DVRs, two of which are used during match days specifically for safety and crowd control purposes. These allow control room operators and the police to automatically record, in real time and at maximum resolution, any incidents they are viewing. If required, the recorded video can then be very quickly retrieved and backed up for the police to use as evidence, using the SHR-5162's built-in DVD-RW or USB. The 16 Channel SHR-5162 utilises MPEG-4 compression to record high quality images whilst minimising video storage requirements.

Two of the other SHR-5162s are used for general security purposes which include recording video of the activities of unwanted visitors, such as ticket touts. A fifth SHR-5162 has been deployed as part of a separate CCTV system installed in the club's shop which is used to deter and detect would be shoplifters.

Commenting on the choice of the Samsung SHR-5162 DVR, Martin Foster, a Director of Sevenoaks based Spy Alarms said: "We have been maintaining Charlton Athletic's CCTV system for over five years. The previous recording system had been doing a good job

but it lacked many of the advanced features that come as standard with the SHR-5162. Having installed Samsung equipment previously for other clients, we were confident that the new DVRs would be reliable which was a key consideration bearing in mind what they are being used for. We also felt comfortable recommending the SHR-5162 to Charlton Athletic as its reliability is backed by a full three year manufacturer's warranty."

To complete the upgrade of the CCTV system, Spy Alarms, which has just celebrated its 25th anniversary, also supplied and installed twelve Samsung 19" monitors and a 32" 'spot' monitor.

"With over 20,000 fans on match days it is important for our security team to be able to make sure everyone is safe and that the day runs smoothly," said Mick Everett, Operations Director for Charlton Athletic FC. "We depend on our CCTV system to a high degree and we therefore rely on Spy Alarms to ensure that it is effective at all times. We are fortunate that their Engineer, Simon Richardson, who is normally the technical person who is on six hour call-out, provides us with an excellent level of service and he is well supported by his other colleagues at Spy Alarms, who all show a keen interest in the system."



Millwall FC

## Millwall Football Club scores with Samsung Techwin DVR's

Thirty-eight dome cameras are deployed at carefully selected locations both inside and outside Millwall FC's ground, known as "The Den", to monitor crowd activity and to ensure everyone visiting the club on match days can do so in a safe environment.

The images from the dome cameras, which were installed five years ago at the South East London stadium, were until recently recorded on S-VHS analogue video recorders. Colin Sayer, explains: "We did consider investing in a digital video recording system when we refitted the control room and the domes were first installed but we were not convinced that what was available at the time could adequately do the job and it seemed an expensive option."

Colin is Millwall FC's Stadium Manager and Safety Officer. He has the important responsibility of ensuring all necessary measures have been taken to ensure crowd safety and that includes the deployment of an effective CCTV system.

Five years on and not only has the cost of digital recording decreased substantially, but the technology employed has also significantly advanced dramatically and bears no resemblance to what was available when Colin Sayer and his colleagues first considered digital video recording as an option.

"One of the most valuable features now

available to us via the Samsung Techwin DVRs is the ability to cost effectively record high quality D1 resolution images from all the cameras in real time. We are using three Samsung Techwin SVR-1680 DVRs to achieve this, each having 4TB of internal storage capacity. This means they can collectively store all the video recorded for in excess of twenty separate match days. With our previous analogue recording system we would have had to use a very large number of tapes to do the same job, which would have to be managed too."

Equally important to Colin is how easy it is for his control room colleagues to extract video evidence from the DVRs to allow the police to investigate any incident. Small amounts of video can easily be copied onto a DVD using the SVR-1680's built-in DVD writer or onto a storage device such as a memory stick by utilising one of the machine's two front panel USBs. When required, all the recorded match day video can be copied via a server onto a hard drive which the police can then remove from site.



Samsung Techwin digital recorders in Millwall FC's control room store high quality D1 resolution images

Millwall FC's all seated stadium, known as "The Den", has a capacity of 20,000



“One of the most valuable features now available to us via the Samsung Techwin DVRs is the ability to cost effectively record high quality D1 resolution images from all the cameras in real time.”

Colin Sayer,  
Millwall FC's Stadium Manager and Safety Officer



“Compared to how the analogue system used to work, it is a big step forward for us to be able to look at recorded video or back it up, without in anyway affecting the continuous real time recording of ‘live’ images,” added Colin who has worked at Millwall FC for over twenty-three years. “Investing in this latest recording solution demonstrates the Chairman’s and Club’s continuing commitment to make Millwall football club a safe and enjoyable place to visit.”

The construction of “The Den” was completed in 1993. It is a 20,000 all seated stadium and was the first new stadium construction following the Taylor Report.

Used in this installation

SVR-1680 – 16 channel digital video recorder



Samsung Techwin’s SVR-1680 is able to record D1 resolution images in real time over all 16 channels (400ips). Other features include three multi-screen and one spot monitor outputs, internal capacity for up to 4 hard disk drives, two SATA ports and full Samsung Techwin Central Management System (CMS) software support.

The DVR’s were commissioned by CCTV specialists ScanGuard who originally installed the dome cameras and the analogue recording system. ScanGuard’s Managing Director, Richard Frere said: “With 38 cameras on site, we did not expect to find such a cost effective solution to do this job. We looked closely at a large number of manufacturers’ DVRs before arriving at the decision to recommend the solution offered by Samsung Techwin. The SVR-1680’s ability to record at D1 resolution in real time made our decision relatively easy.”

SVR-1645 – 16 channel digital video recorder



Samsung Techwin’s SVR-1645 is able to record CIF resolution images in real time over all 16 channels (400ips), or all/selected channels at D1 resolution (100ips). Other features include one multi-screen and one spot monitor output, internal capacity for up to 2 hard disk drives, one SATA port and full Samsung Techwin Central Management System (CMS) software support.

In addition to the SVR-1680s, ScanGuard has also installed a Samsung Techwin SVR-1645 DVR, which is used for 24 hour general security purposes including images from the dome cameras observing the outside of the stadium and the car park.

ScanGuard sourced the DVRs from ADI Global Distribution, one of the UK’s leading specialist security distributors.

Millwall Football Club currently play in the Coca-Cola Football League One.



HB Litherland’s 42,000 square foot warehouse houses a wealth of high-value products

HD Litherland

HB Litherland’s vote of confidence for Samsung Techwin professional security solutions

Blackpool based distributor HB Litherland has recently upgraded its CCTV system with a solution sourced entirely from Samsung Techwin’s range of professional security products.

With a warehouse that covers 42,000 sq ft and houses millions of pounds of high value products from a large number of well known manufacturers it is not surprising that HB Litherland, one of the UK’s leading wholesalers of electronic products, has installed the very latest CCTV technology to protect stored goods and to create a safe and secure working environment for its staff.

HB Litherland supplies a range of consumer and professional products, including CCTV equipment from a dedicated security division, to over 25,000 clients across the UK. So when it came to choosing a brand that offers an exceptional quality of product backed by class-leading support the company turned to Samsung Techwin’s range of security products. “We wanted to get the very best out of our investment in CCTV and by purchasing a complete solution from one manufacturer we felt we would avoid potential compatibility issues which might affect the overall performance of the system,” said Tony Lord, CCTV Technical Manager for HB Litherland.

“We recommend Samsung Techwin CCTV products everyday of the week to our customers and have always had positive

External



SPD-3300 dome in a fully weatherproof housing gives flexible viewing over the car park and building perimeter

Internal



SDC-425 camera with wide-angle lens provides a full overview of the dispatch bay

Internal & External



The SIR-4150 features extensively throughout this installation, both internally and externally, providing effective 24-hour surveillance thanks to the units integrated IR LEDs

A discreet SID-460 keeps watch over the reception area and doorway



“We recommend Samsung Techwin CCTV products everyday of the week to our customers and have always had positive feedback on the performance and quality of the equipment.”

Tony Lord,  
CCTV Technical Manager for HB Litherland.



feedback on the performance and quality of the equipment. It was therefore a logical and easy decision for us to use Samsung Techwin cameras throughout our facility and to record the images captured by the cameras on a Samsung Techwin digital video recorder,” added Tony.

Fifteen Samsung Techwin cameras collectively monitor all activity at HB Litherland’s reception, trade counter, goods in/out and warehouse aisles.

The recorded video is stored on a Samsung Techwin SVR-1680 sixteen channel DVR which has the capability to record real-time D1 resolution images simultaneously across all channels. “We worked closely with Samsung Techwin to ensure that we selected the right camera model for each location and this has resulted in us having a CCTV system which ensures that if there ever is an incident, we will be able to pass first class video evidence onto the Police,”

added Tony Lord. Commenting on the project, Simon Shawley, Samsung Techwin’s senior sales manager for the UK and Eire said: “It’s a massive testament to the quality of Samsung Techwin products when a company who is involved in the supply of security equipment, such as HB Litherland, is prepared to reinforce their decision to recommend our CCTV solutions to their customers by using our products to protect their own premises.”

Used in this installation

SVR-1680



16 channel real-time DVR

- Real-time D1 resolution recording on all channels
- 16-channel real-time audio recording
- Supplied with licence-free Content Management System (CMS) software
- Built in DVD drive and 2 x USB ports

SDC-425



1/3" high resolution colour /monochrome camera

- 580TVL resolution
- SSNR11 image noise reduction technology
- Digital image stabilisation
- Highlight compensation

SVD-4600



- 560TVL resolution
- SSNR11 image noise reduction technology
- Weatherproof to IP66
- Digital image stabilisation

SID-460



1/3" high resolution colour/ monochrome fixed dome

- 580TVL resolution
- SSNR11 image noise reduction technology
- 2.8-10mm varifocal lens
- 3-axis camera bracket

SPD-3300



1/4" fully functional PTZ dome

- 30x optical zoom
- 128 preset positions
- SSNR image noise reduction technology
- Motion detection

SIR-4150



1/3" true day/night camera with built-in LED IR

- IR cut-filter
- SSNR image noise reduction technology
- 3.8-9.5mm varifocal lens
- Weatherproofed to IP65



**SAMSUNG TECHWIN**



**IQ Trading - официальный дистрибьютор в Украине**  
Украина, 04080, Киев, ул. Межигорская, 87-А  
тел.: +380(44) 351 1437, факс: +380(44) 351 1438  
e-mail: [disti@iqtrading.com.ua](mailto:disti@iqtrading.com.ua), [www.iqtrading.com.ua](http://www.iqtrading.com.ua)